

DIMENSIONS

Fig. 1: Complete Underbody Frame (Print for Best Results)

1995 Toyota 4Runner

For

Copyright © 1998 Mitchell International

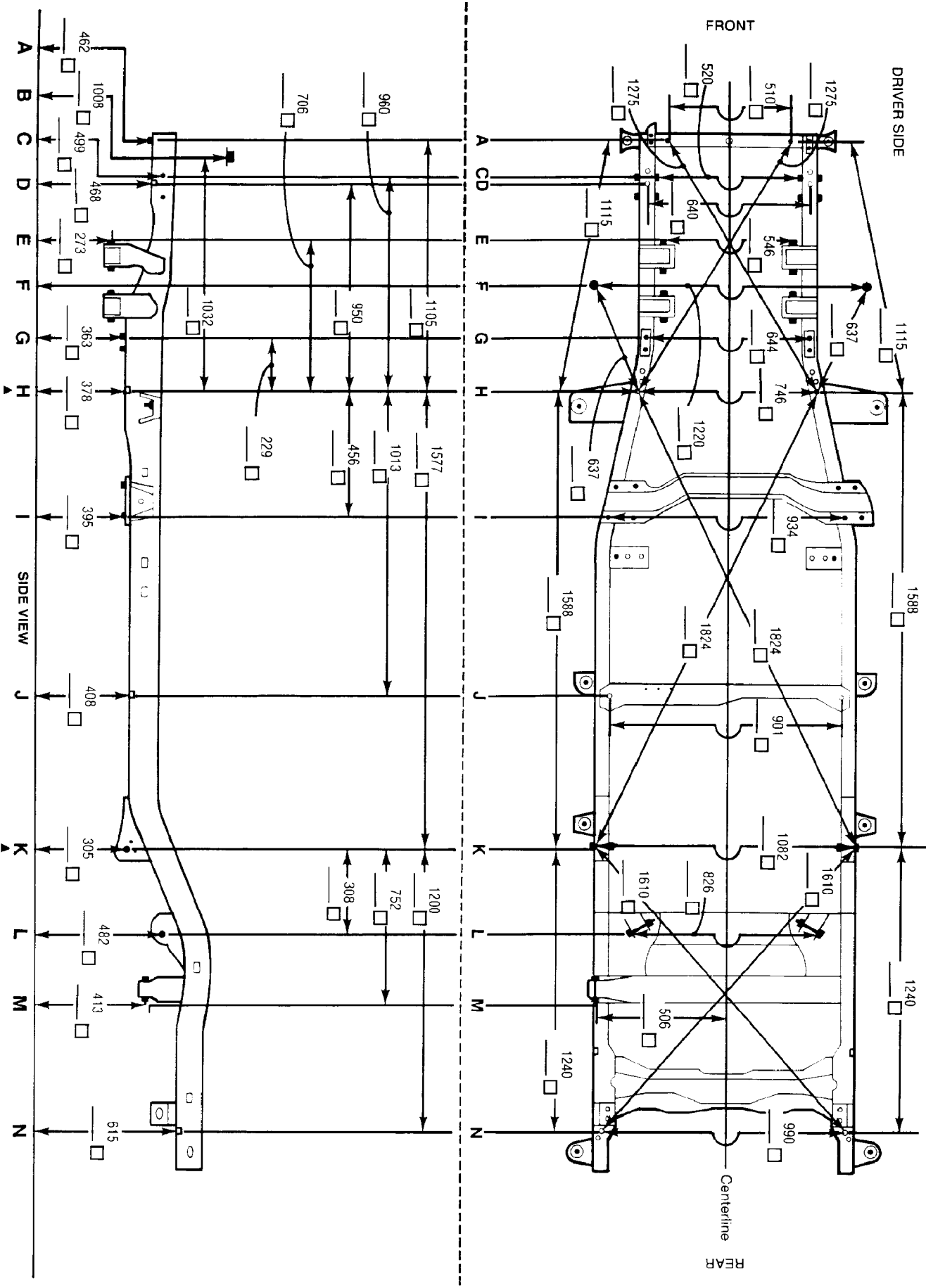
Thursday, October 07, 1999 11:29AM

PLEASE SEE "MEASURING EXPLANATION" AT FRONT OF MANUAL

2625 mm (103 5/16") WHEELBASE

BOTTOM VIEW

Dimensions from Centerline are Combined When Equal
Divide by 2 for Individual Dimensions from Centerline
All Bolt and Holes are Measured to Center
Unless Otherwise Described in Measuring Point Designators



MEASURING POINT DESIGNATIONS

- A - Head of Bolt - Crossmember
- B - Head of Bolt - Front Fender
- C - Tip of Threaded Bolt - Steering Gear Mount
- D - Center of 14 mm (9/16") Round Hole
- E - Tip of Threaded Bolt - Control Arm Mount
- F - Center of Lower Ball Joint - (Suspension Loaded)
- G - Head of Bolt - Sway Bar Mount
- H - Center of 14 mm (9/16") Round Hole
- I - Head of Bolt - Transmission Crossmember
- J - Center of 11 mm (7/16") Round Hole
- K - Head of Bolt - Trailing Arm Pivot
- L - Head of Bolt - Tracking Arm Mount
- M - P.S. Tip of Threaded Bolt - Panhard Rod Mount
- N - Center of 14 mm (9/16") Round Hole

- D.S. - DRIVER SIDE
- P.S. - PASSENGER SIDE

- - BOLTS
- - HOLES
- ▲ - DATUM LINE CONTROL POINT

TIGHTENING SPECIFICATIONS

| Application | Ft. Lbs. (N.m) |
|---|----------------|
| Front Suspension | |
| Axle Hub Bearing Lock Nut | 35 (47) |
| Calliper-to-Knuckle Bolts | 90 (123) |
| Lower Ball Joint-to-Lower Control Arm Nut | 105 (142) |
| Lower Control Arm Pivot Bushing Nuts | 145 (196) |
| Stabilizer Bar-to-Lower Control Arm Nut | 19 (25) |
| Torsion Bar Torque Arm-to-Upper Control Arm Nuts | 64 (87) |
| Upper Ball Joint-to-Knuckle Nut | 105 (142) |
| Upper Control Arm Pivot Shaft-to-Frame Bolts | 131 (179) |
| Upper Control Arm Pivot Shaft-to-Control Arm Nuts | 166 (226) |
| Rear Suspension | |
| Lateral Control Rod Nut | |
| Left Side | |
| Right Side | 83 (113) |
| Lower Control Arm Front Pivot Bolt | 101 (137) |
| Lower Control Arm Rear Pivot Nut | 148 (201) |
| Stabilizer Link-to-Mount Bracket Nut | 148 (201) |
| Stabilizer Link-to-Stabilizer Bar Nut | 13 (17) |
| Upper Control Arm Front Pivot Bolt | 70 (95) |
| Upper Control Arm Rear Pivot Nut | 148 (201) |

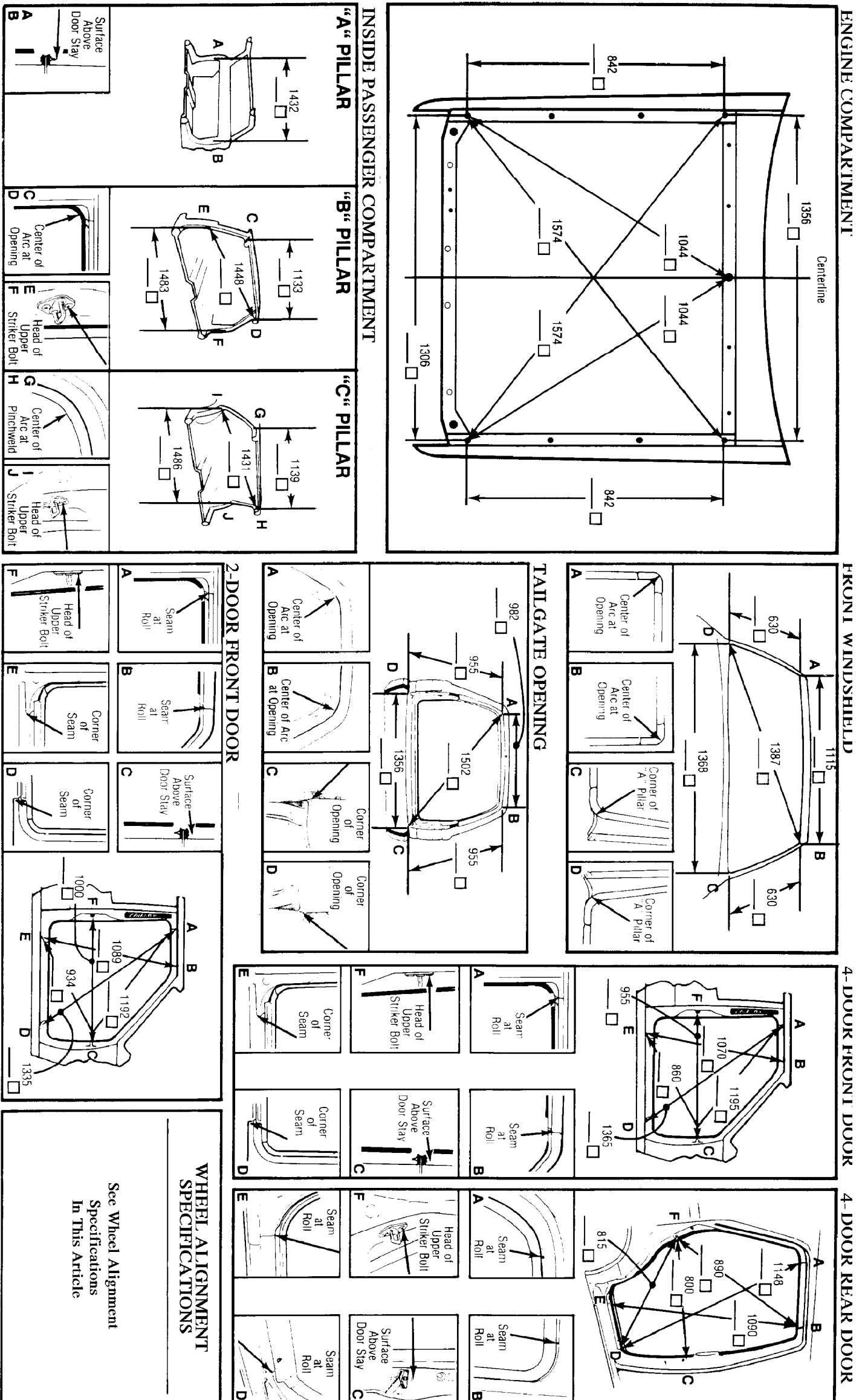
DIMENSIONS

Fig. 2: Complete Upperbody (Print for Best Results) (p. 2)

1995 Toyota 4Runner

For

Copyright © 1998 Mitchell International
Thursday, October 07, 1999 11:29AM



DIMENSIONS

Fig. 3: Engine Compartment (p. 3)

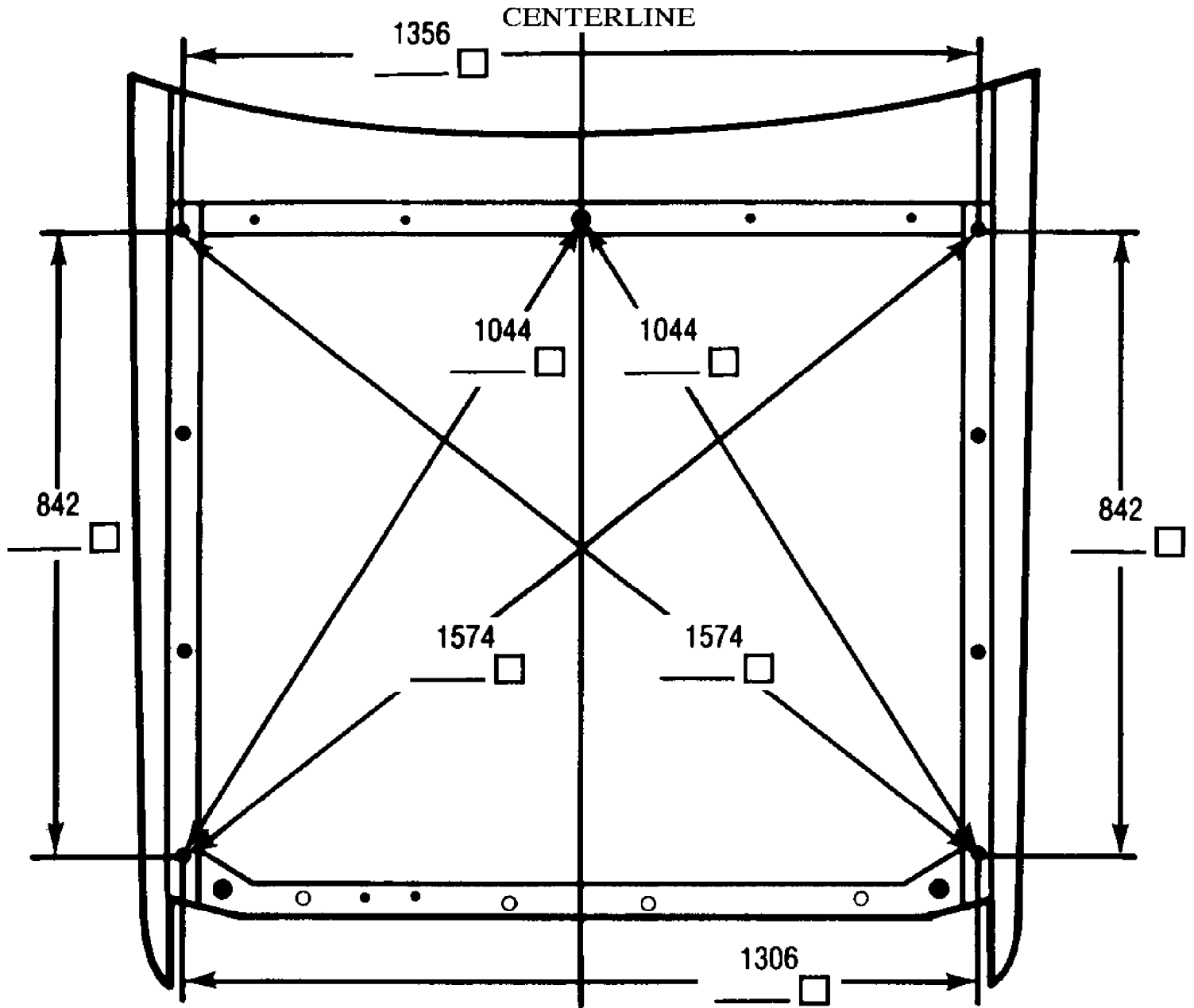
1995 Toyota 4Runner

For

Copyright © 1998 Mitchell International

Thursday, October 07, 1999 11:29AM

ENGINE COMPARTMENT



93A05762

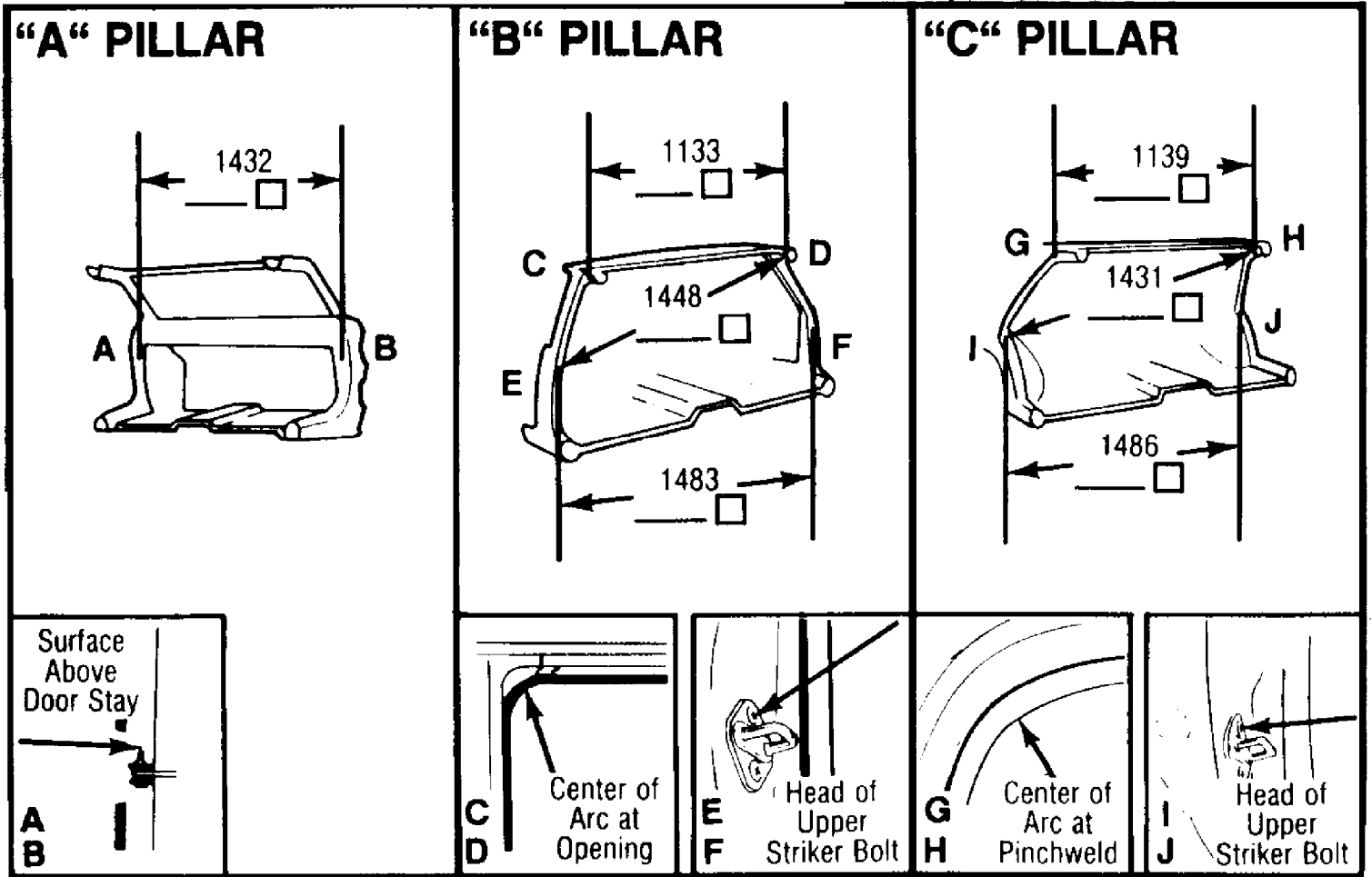
DIMENSIONS

Fig. 4: Inside Passenger Compartment
1995 Toyota 4Runner

For

Copyright © 1998 Mitchell International
Thursday, October 07, 1999 11:29AM

INSIDE PASSENGER COMPARTMENT

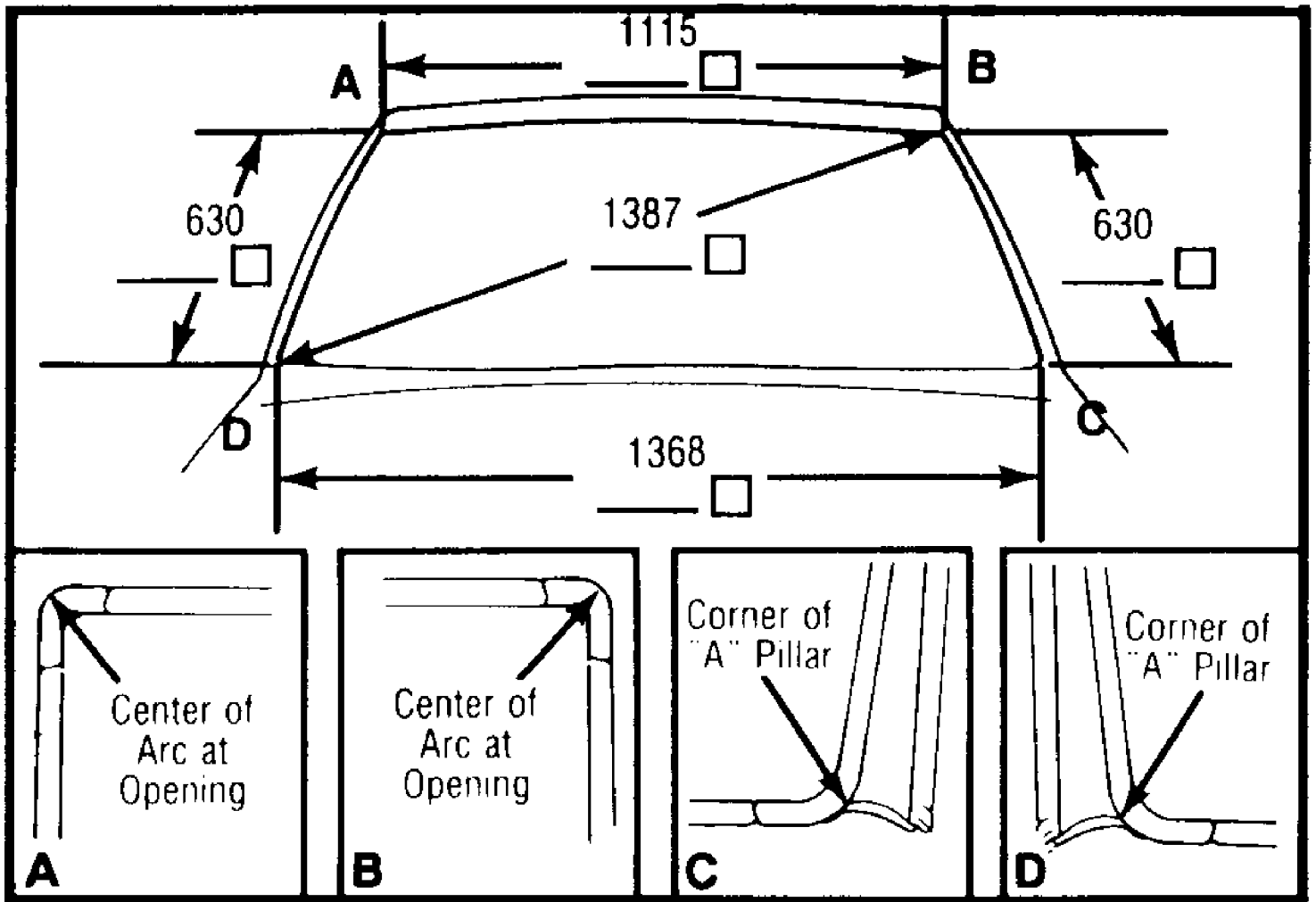


93J05766

DIMENSIONS
Fig. 5: Front Windshield (p. 5)
1995 Toyota 4Runner

For
Copyright © 1998 Mitchell International
Thursday, October 07, 1999 11:29AM

FRONT WINDSHIELD

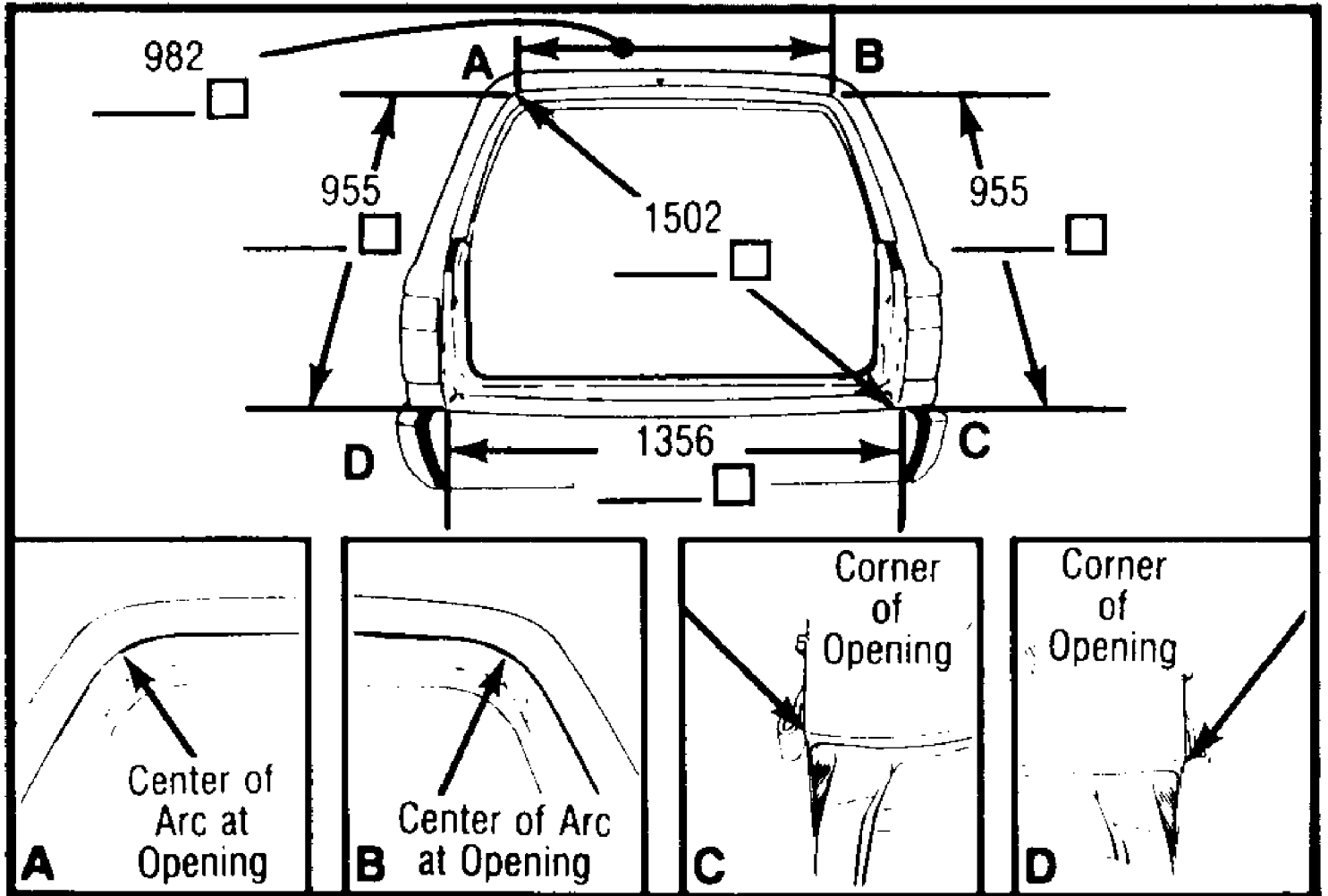


93C05763

DIMENSIONS
Fig. 6: Tailgate Opening (p. 6)
1995 Toyota 4Runner

For
Copyright © 1998 Mitchell International
Thursday, October 07, 1999 11:29AM

TAILGATE OPENING



93B05767

DIMENSIONS

Fig. 7: 2-Door Front Door (p. 7)

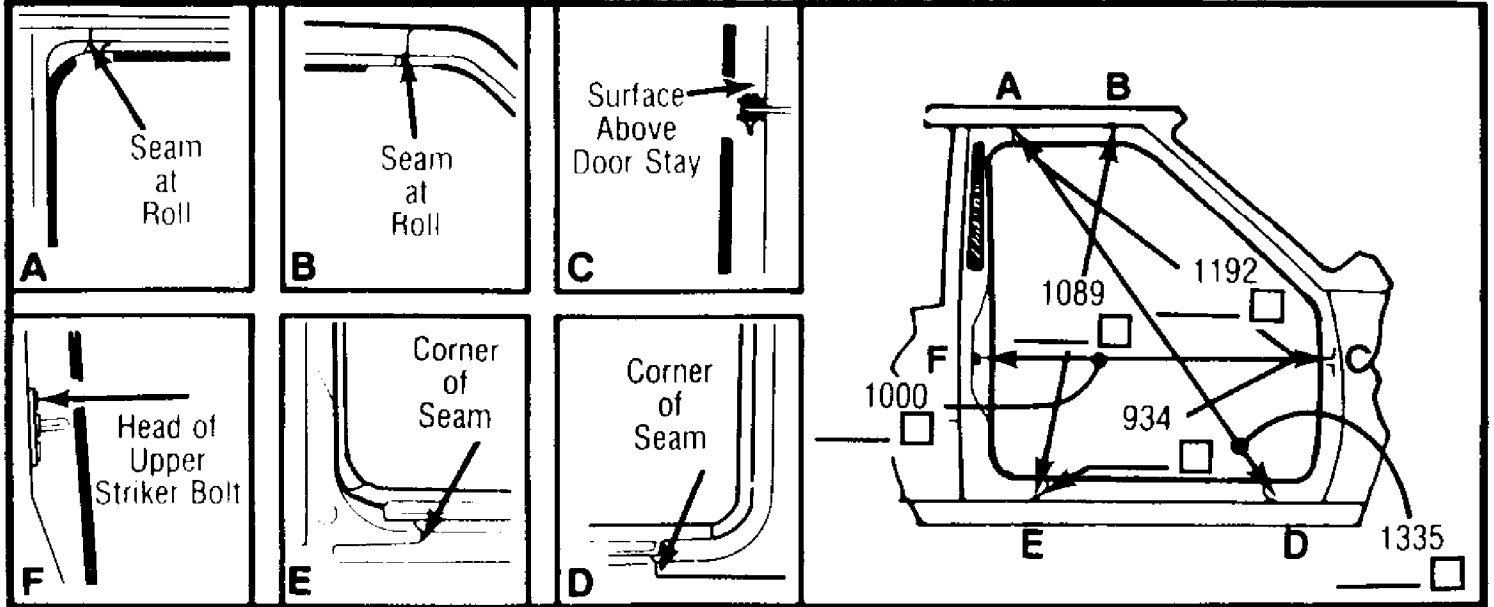
1995 Toyota 4Runner

For

Copyright © 1998 Mitchell International

Thursday, October 07, 1999 11:29AM

2-DOOR FRONT DOOR



93D05768

DIMENSIONS

Fig. 8: 4-Door Front Door (p. 8)

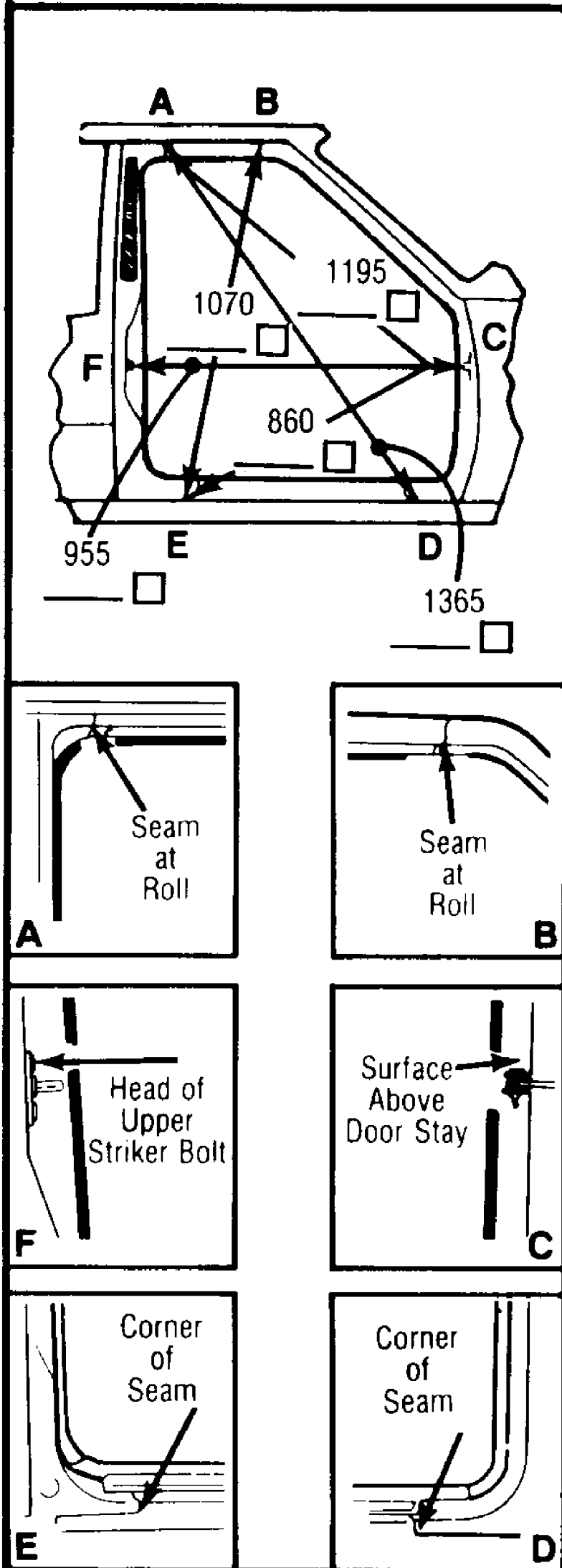
1995 Toyota 4Runner

For

Copyright © 1998 Mitchell International

Thursday, October 07, 1999 11:29AM

4-DOOR FRONT DOOR



93E05764

DIMENSIONS

Fig. 9: 4-Door Rear Door (p. 9)

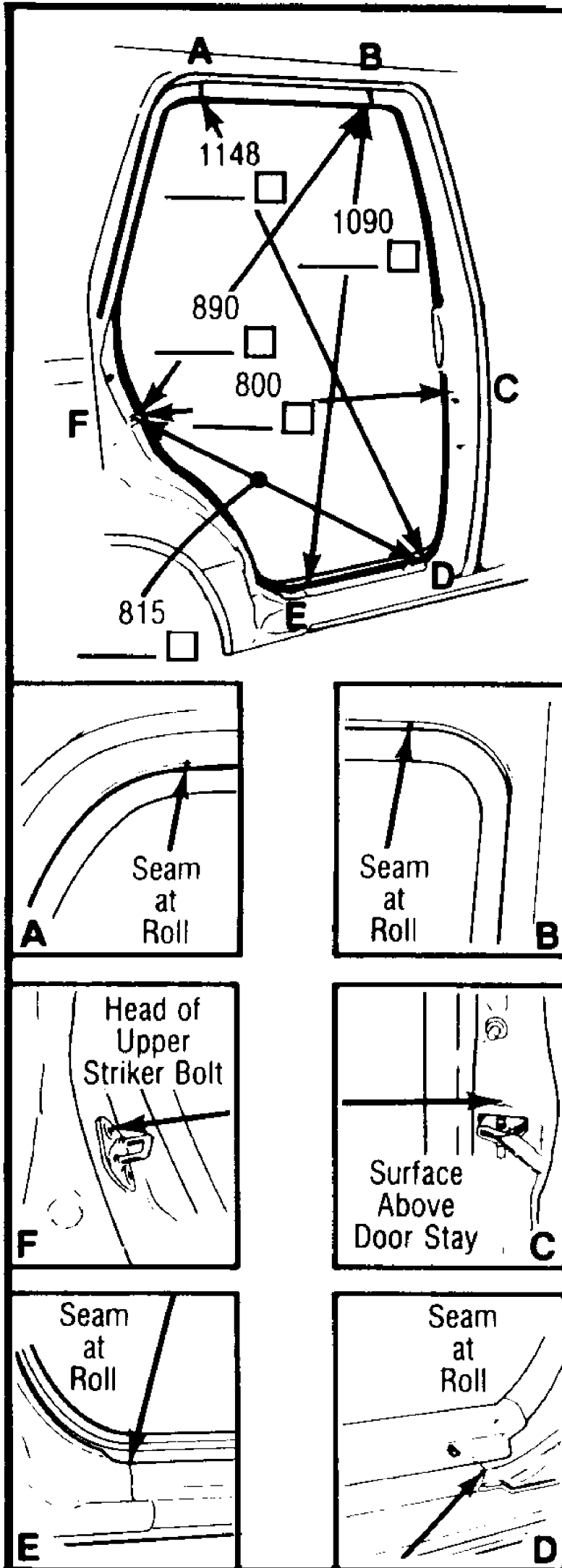
1995 Toyota 4Runner

For

Copyright © 1998 Mitchell International

Thursday, October 07, 1999 11:29AM

4-DOOR REAR DOOR



93H05765